

Bark Beetle Academy | Universitas Brawijaya | October 2024

Malang, East Java, Indonesia

Day 0 Monday, October 14 Arrival to Malang

16:30 pick up at Swiss Belinn

17:00 dinner and reception: UB Guesthouse

Day 1 Tuesday, October 15 at UB Guesthouse

Minisymposium: Indonesian Bark and Ambrosia Beetle Research: a century of international collaboration

8:45 arrive to UB Guesthouse

9:00 Welcome by Rector/Vice Rector of Universitas Brawijaya

9:15 Welcome by Jiri Hulcr (includes a pre-test)

9:30 Sarah Smith: The history of research on Asian bark beetles

10:00 Jiri Hulcr: Indonesia connected to the world: beetles, forestry, and global trade

10:30 break

10:45 Hagus Tarno, BRIN, Plant Quarantine: The history and the present of wood borer research in Indonesia

11:30 Lei Gao: Current bark beetle issues in China

12:00 lunch

13:00 Jiri Hulcr: How to design bark beetle research for high-impact publications

break

14:30 Simon Lawson: Invasive and native wood borers in Asia and Australia with focus on Eucalyptus

15:30 DISCUSSION on research priorities: What should bark beetle researchers and students in Asia focus on?



Day 2 Wednesday, October 16 **The systematic section**

Medical Sciences Building, Parasitology lab, 3rd floor

8:30 Pick up at Swiss Belinn hotel

9:00 Introduction to bark and ambrosia beetle diversity (Jiri Hulcr)

9:30 test ERUDITUS

9:45 online resources on bark and ambrosia beetles (J. Hulcr)

10:00 Scolytine morphology: Find a character! (S. Smith)

11:00 Reference Collections of invasive bark beetles (Hulcr & Smith)

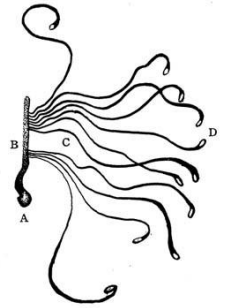
Practical training in identification of the world's 40 most important scolytine species with a synoptic collection, a booklet, and a microscope

12:00 lunch

13:00 work with Reference Collections: smaller tribes

16:00 How to collect bark beetles in the forest (J. Hulcr)

A 交尾室
B 母坑
C 幼虫坑
I 蛹室



Day 3 Thursday, October 17 **Field trip** (Hulcr, Smith, Lawson)

6:30 pickup at Swiss Belinn

7:00 departure from Medical Sciences Building

8:00 UB forest

- o manual techniques for bark beetle collecting
- o how to submit a photo and a sample for expert diagnosis

12:00-15:00 return time is weather dependent

Day 4 Friday, October 18 **Systematics, and the last day**

8:30 Pick up at Swiss Belinn hotel

9:00 work with the Reference Collections: Xyleborini

12:00 lunch

13:00 work with the Reference Collections: Platypodinae

16:00 post-test, ERUDITUS

16:30 end of the Academy

